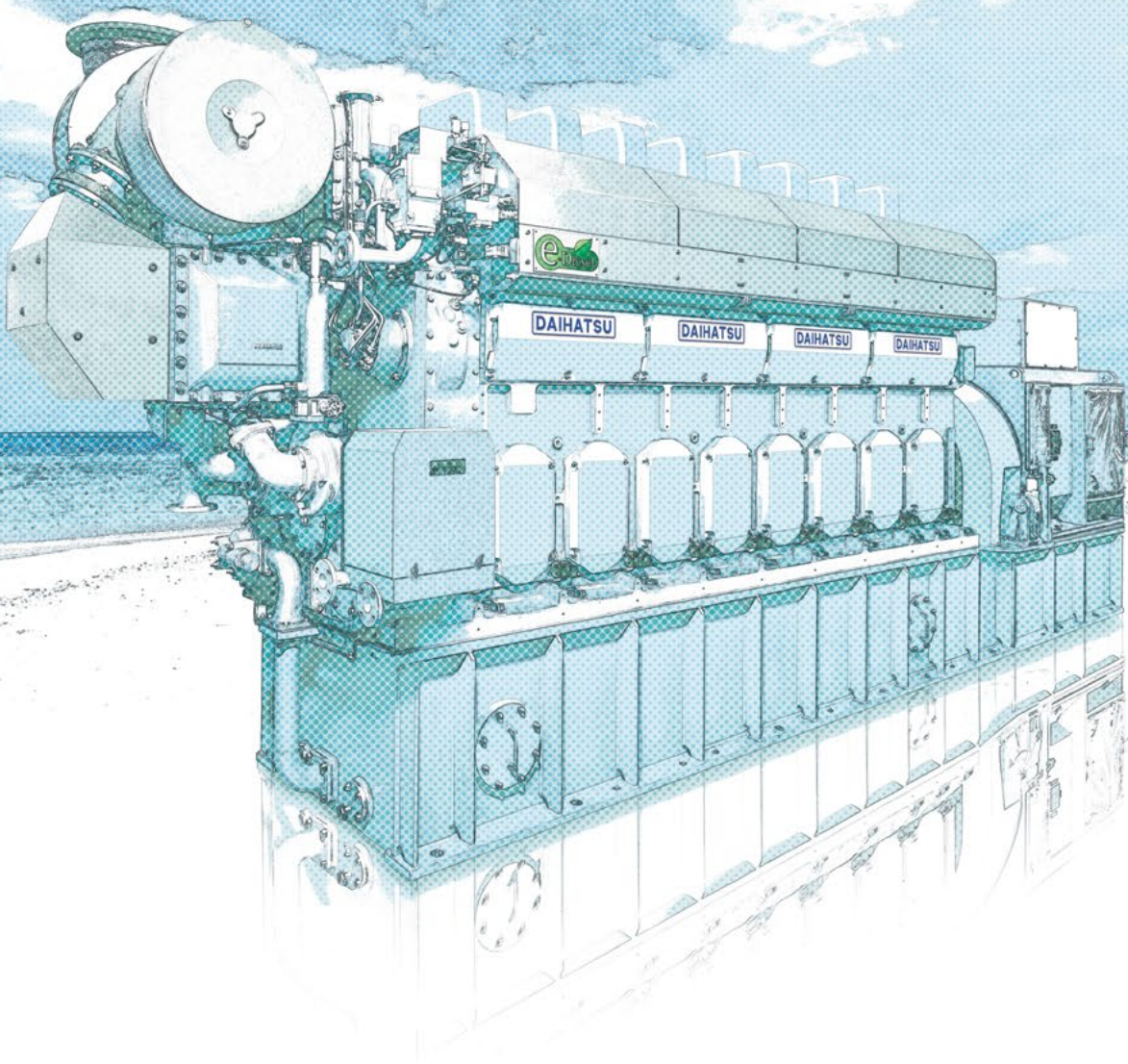


**DAIHATSU**

High-Efficiency Diesel Engine

**DEL-23**



**DAIHATSU DIESEL MFG.CO.,LTD.**

# DEL-23

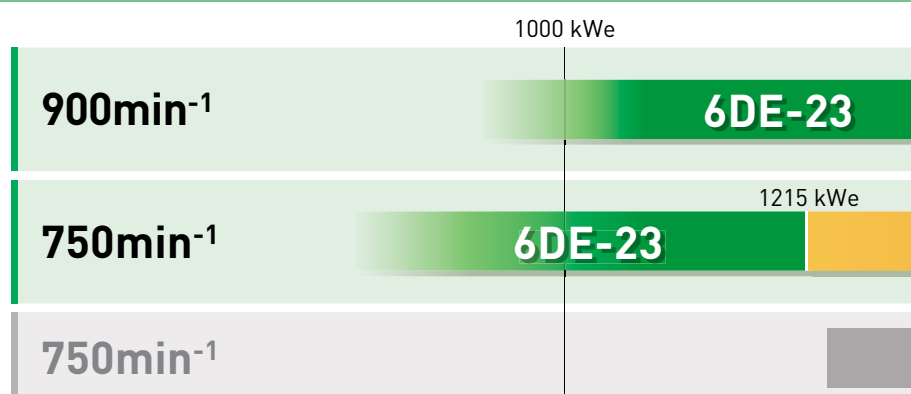
## A long-stroke version of the eco saving space with greater power a

With the installation of environmental devices and the increase in onboard power consumption has been rising in recent years. In response to this trend, we have incorporated a long-stroke engine for marine use, an engine which has already received wide acceptance. The superb environmental performance remains the same, while achieving space-saving and greatly increased output.

### ■ Features

1. The long-stroke design has enabled downsizing
2. The 8-cylinder, 900 rpm engine covers the Daihatsu
3. The height is reduced by approximately 20%,  
[Compared to the Daihatsu D
4. Combination with an SCR system provides NO

### ■ Output Ranges



Output ranges vary depending on the generator.

### ■ Technical Data

#### Main Specifications

Engine Type		8DEL-23		
No. of cylinders		8		
Engine speed	min <sup>-1</sup>	720	750	900
Rated output	kWm	1750		2200
Generator output* <sup>1</sup>	kWe	1660		2090
Bore	mm	230		
Stroke	mm	350		
Piston speed	m/s	8.4	8.75	10.5
Brake mean effective pressure	MPa	2.51	2.41	2.52
Length	mm	7390		
Width	mm	1970		
Height	mm	2860		
Dry mass	kg	30000		

#### Dimen



\*1 Generator efficiency calculated at 95%.

\*2 The dry mass and external dimensions vary depending on the generator specifications and accessories.



# -friendly DE-23 debuts, and low fuel consumption.

ase in electronic equipment,

design in our DE-23 diesel engine  
claim since the first deliveries in 2011.



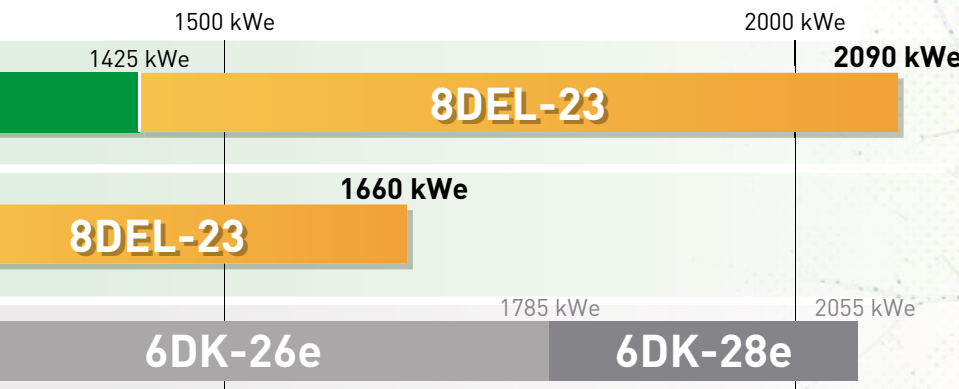
ng, high output, and low fuel consumption.

atsu Diesel output range of 6DK-26e/6DK-28e.

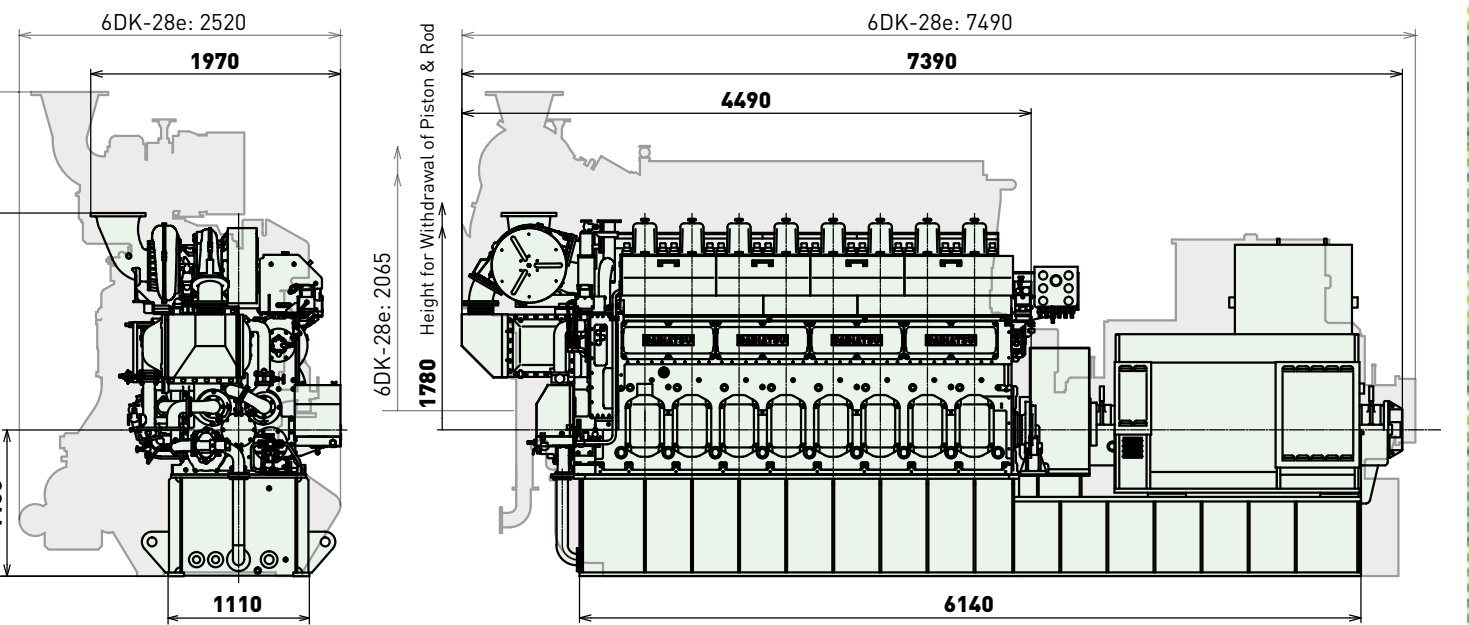
for greater maintenance space.

(iesel 6DK-28e)

x Tier III compliance.



## Dimensional Drawings (Compared with the 6DK-28e)





## **DAIHATSU** **DAIHATSU DIESEL MFG.CO.,LTD.**

### **Head Office**

1-30, Oyodo Naka1-chome, Kita-ku, Osaka, 531-0076 Japan  
TEL: +81-6-6454-2393 FAX: +81-6-6454-2686

### **Tokyo Office**

2-10, Nihonbashi-Honcho 2-chome, Chuo-ku, Tokyo, 103-0023 Japan  
TEL: +81-3-3279-0827 FAX: +81-3-3245-0395

### **Moriyama Division**

45 Amura-cho, Moriyama-city, Shiga, 524-0035 Japan  
TEL: +81-77-583-2551 FAX: +81-77-582-5714

### **Daihatsu Diesel Himeji Mfg. Co.,Ltd.**

12-8, Fuji-cho, Hirohata-ku, Himeji-city, Hyogo, 671-1123 Japan

### **Daihatsu Diesel (EUROPE) Ltd.**

TOG Borough Yards, 13 Dirty Lane, London, SE19PA, UK  
TEL: +44-20-4566-5600

### **Daihatsu Diesel (AMERICA), Inc.**

380 N Broadway, Suite 302, Jericho, N.Y. 11753 U.S.A.  
TEL: +1-516-822-3483/4 FAX: +1-516-822-3485

### **Daihatsu Diesel (ASIA PACIFIC) Pte.Ltd.**

16 Collyer Quay, Income at Raffles #29-02, Singapore 049318  
TEL: +65-6589-9510 FAX: +65-6536-4964

### **Daihatsu Diesel (SHANGHAI) Co.,Ltd.**

Room A-B, Floor 14, Huamin Empire Plaza, No.728, Yanan Rd.(W.), Shanghai, 200050, China  
TEL: +86-21-6225-7876/7 FAX: +86-21-6225-9299

- Please refer to our separate brochure for the "DAIHATSU AFTER-SERVICE NETWORK".
- All information contained in this pamphlet is correct at the time of printing, but may be subject to change without notice.